

**OFFICE OF THE AFRICAN INTERNATIONAL PRESIDENT OF THE INTERNATIONAL PARLIAMENT
FOR SAFETY, PEACE AND JUSTICE (IPSPJ) AFRICA.**

HONOURABLE CARDINAL PROFESSOR ESAPA JOSEPH SONA JP

APPROVED PROPOSAL FOR THE DEVELOPMENT OF THE REPUBLIC OF CAMEROON.



ICS-Groupe Oberlin
Be Part of It

GROWTH OPPORTUNITY

Cameroon Private Investment
Approval Request



Cameroon Request for Private Investor Project Approval

ICS-Groupe Oberlin Agribusiness Logistics Overview

- » Proposal for Central Africa Regional Hub and Spoke Agricultural Distribution Network. Where as, Cameroon is a major contributor to the regional food supply it can not reach is potential without a more advance regional logistics distribution network.
- » This Proposal offers a 7 Hub and Spoke Market and Distribution network for local growers to go to market easier and more efficiently, while promoting both intra-Africa and international trade.
- » This Proposal creates jobs, training, education development and GDP growth for all of Cameroon, while increasing the access to the food supply in the Central Region of Africa.
- » This is a fundamental building block for the growth and revitalization of Cameroon.

Meeting Cameroon Growth Targets

- » Industrial
- » Tourist
- » Craft
- » Cultural
- » Health
- » Educational
- » Energy
- » Agricultural, livestock and fisheries
- » Social housing
- » Urban transport sectors

About Us

Groupe Oberlin



OBERLIN GROUP is your single access point for all of your project needs, thus Eliminating the need to use multiple vendors. We are able to offer relevant solutions that meet the customized needs of our Clients within their budget Limits.

- » The OBERLIN GROUP is a group of companies with diversified trades, anxious to provide answers adapted to the needs of individuals, businesses and public administrations. Our skills are varied, but strong enough to support you in taking up the challenges that arise.
- » The OBERLIN GROUP aims to be a portal of diversified products and services that focuses on the areas of agribusiness, construction and real estate management.
 - We can get your products to markets intra-Africa and internationally with our agribusiness solutions.
 - We will meet the demands of investment buyers and developers residential and commercial construction needs, while offering real estate management for post construction property sales and leasing.



ICS-Groupe Oberlin
BePartofIt

An **IRON CURRENCY SOLUTION**
Proprietary & Confidential

About Us

IRON Currency Solutions



IRON Currency Solutions is where we solve everyday problems with thought leadership and innovation to help individuals and small to medium businesses achieve their optimal currency value. "Iron Sharpens Iron", when we seek to understand our customers needs and address them with "best in class" solutions from more than 30 years of corporate experience. These invaluable best practices can be game changers in optimizing their individual and business performance.

- » **Sankofa Global Trading, Corp.(SGT)**, a subsidiary of IRON Currency Solutions, is a service-oriented export trading company providing domestic and international companies the opportunity to import and export products to new and existing markets. With a philosophy deeply rooted in extensive market knowledge and personal relationships. The objectives of all the business entities involved are always carefully evaluated in order to execute flawless and profitable transactions. Through comprehensive worldwide business relationships, varying from shipping logistics to and from the United States of America, SGT has developed unparalleled networking capabilities for profitable international business.
- » Our **Country Manager (Africa)** oversees the operations of a company's affiliates in the United States market. Country Managers (Africa) oversee logistics, develop new business relations and help facilitate the companies profitability in the US Market. They are responsible for managing overall operations, recruiting staff and creating budgets. Country Managers (Africa) also develop and submit weekly, monthly or quarterly performance and progress reports to company headquarters.



Partnership *Iron Currency* *Solutions and Groupe* *Oberlin*

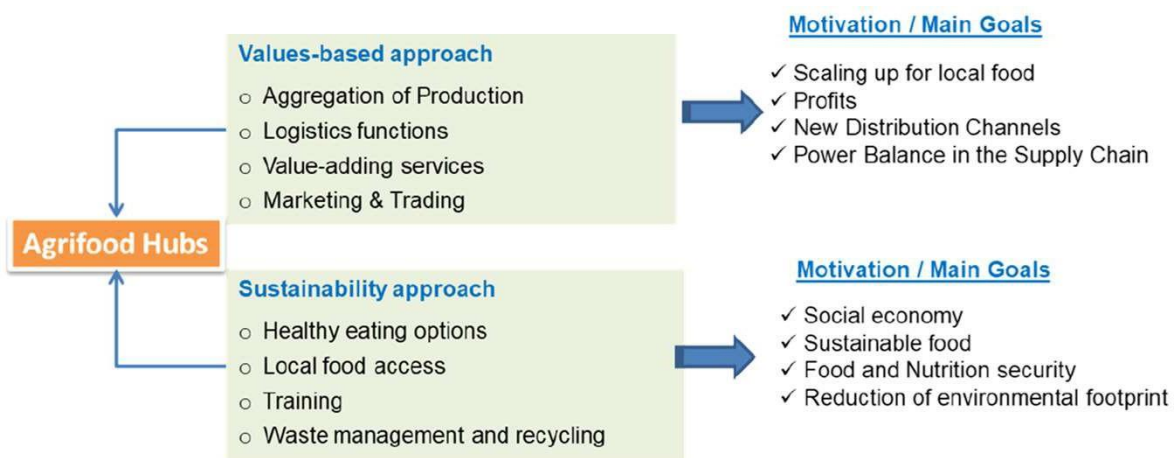
Strategic Business
Partnership

ICS-Groupe Oberlin
Be Part of It



An **IRON CURRENCY SOLUTION**
Proprietary & Confidential

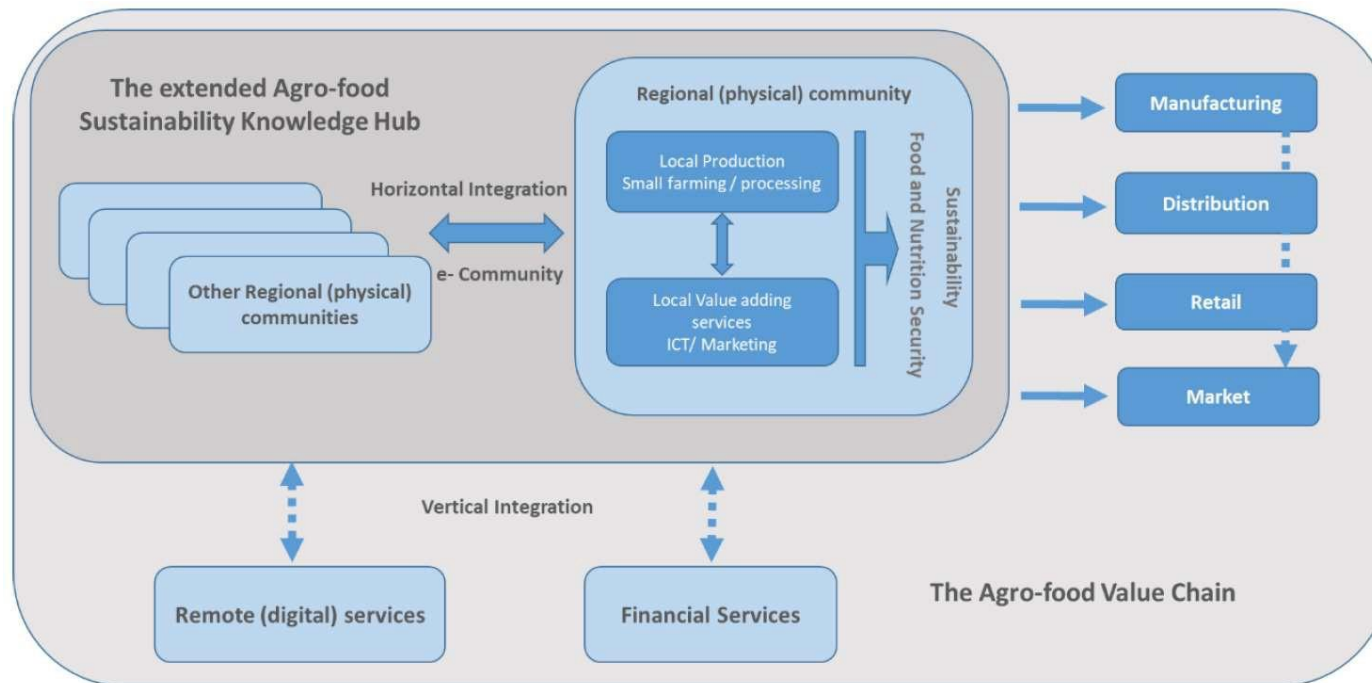
Agro-food Hubs Approach



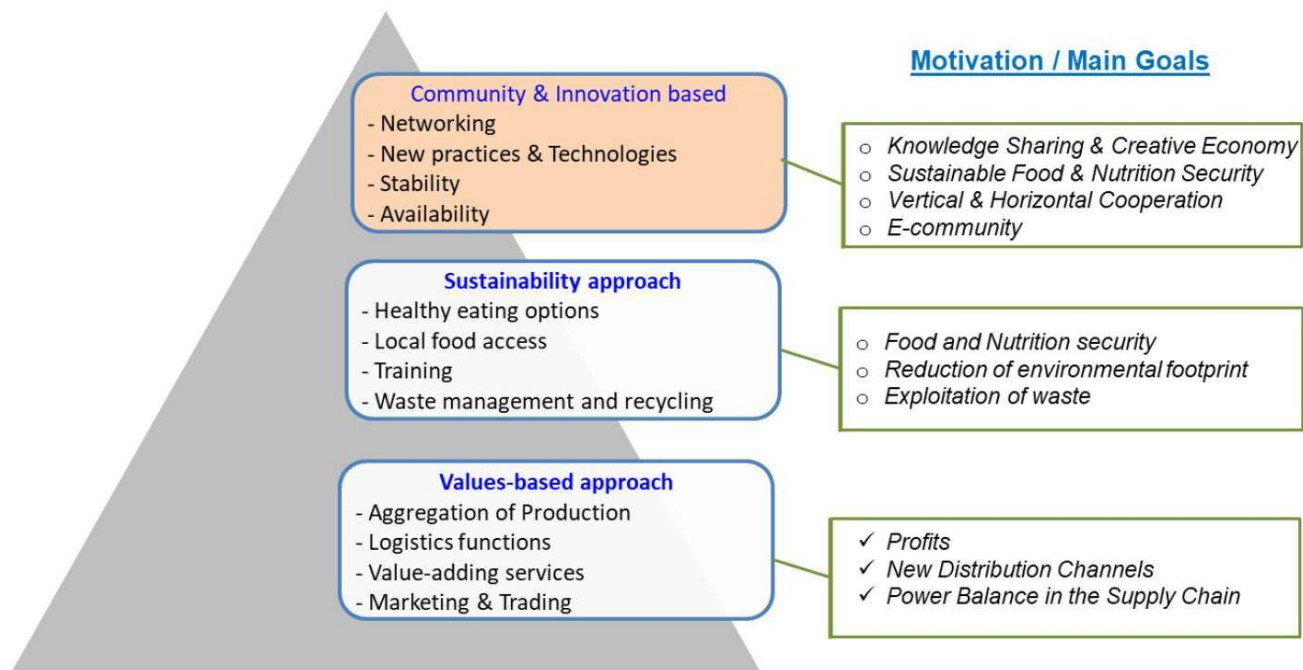
In the value-based approach, Agro-Food Hubs are perceived as innovative business platforms aiming at scaling up local food production through the coordination and consolidation of small and medium-size producers in order to achieve better go to market access and positioning intra-Africa and internationally.

United States Department of Agriculture (USDA) working definition of a food hub as "a business or organization that actively manages the aggregation, distribution and marketing of source-identified food products primarily from local and regional producers to strengthen their ability to satisfy wholesale, retail and institutional demand[s]"

Agro-food Value Chain



Agro-food Value Chain



Proposed Agro-food Hub and Spoke Market Trading Routes

A hub and spoke network is a centralized, integrated logistics system designed to keep costs down. Hub and spoke distribution centers receive products from many different origins, consolidate the products, and send them directly to destinations.

7 Hub Distribution System

Phase I: (Total 15 Trucks)

Hub 1: Yaounde

- To/From Douala or Kribi Port or Bata Port (Equatorial Guinea)
- To/From Bertoua, Ngaoundere, Garoua, Lere, Ndjamen
- To/From Equatorial Guinea
- To Gabon
- To Republic of the Congo

Hub 2: Douala Port (2 hours from Yaounde) and Hub 3: Kribi Port (2 hours from Yaounde)

- 1300 ships comes at Douala seaport every year and this seaport can't do more.
- Kribi is the deep seaport with capacities many times better than Douala seaport.
 - To Yaounde

Phase II (Total 40 Trucks)

Hub 4: Bata Port, Equatorial Guinea (7 hours from Yaounde)

- To Yaounde

Hub 5: Bertoua (5 hours from Yaounde)

- To Central Africa Republic: Gamboula, Moloundou, Babou
- To Republic of the Congo: Brazzaville

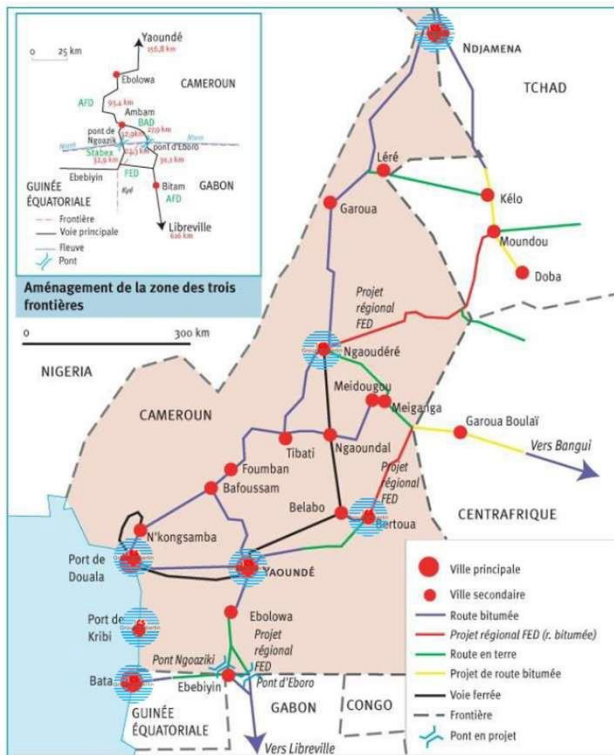
Phase III (Total 75 Trucks)

Hub 6: Ngaoundere (7 hours from Yaounde)

- To Central Africa Republic: Bocaranga, Ngoundal, Balbokoum
- To Nigeria: Tungo, Gunye, Mubi

Hub 7: Kousseri (10 hours from Yaounde)

- To Nigeria: Mubi, Urarabe, Limoni
- To Chad: Bongor, Dourboli, N'Djamena



Proposed Hub and Spoke Warehouse Distribution Centers



Each Hub will have a warehouse where products will be distributed to/from the Ports and local Agribusinesses to markets through the Central African Region.

Buildout Needs:

- All Terrain Trucks and Driver Training
- Truck Maintenance Workshops
- Warehouses
- GPS software
- Inventory software
- Warehouse Forklift Equipment
- Container House living for Onsite Staff
- Main Offices
- Truck wash bays



Hub Market Example



Bath House



Market



Staff Living Quarters



Public Toilets



Fou Fou Processing

ICS-Groupe Oberlin Intra-Africa Supply Chain: Cameroon



Farmers
 Farmers
 Farmers
 Farmers
 Ports: Douala, Kribi & Bata (EG)

Central Markets

Yaounde Central Hub

Farmers
 Markets
Cameroon
 Markets
 Farmers

Regional Hubs

Chad
 Nigeria
 Equatorial Guinea
 Congo
 Central Republic
 Gabon

Border State Markets

ICS-Groupe Oberlin
 BePartofIt

ICS-Groupe Oberlin
ALEXpay

ICS-Groupe Oberlin
ALEXpay

ICS-Groupe Oberlin
ALEXpay
 An **IFCAN CURRENCY SOLUTION**
 Proprietary & Confidential

Agro-Hub and Spoke Market/Distribution Center

Description	Quantity
Transportation	
All Terrain Trucks	161
Hub/Spoke Centers	7
Warehouse	7
Truck Maintenance Area	4
Fueling Stations	7
Business Offices	7
Hub Farmers Market	
Employee Quarters	7
Public Wash Houses	7
Public Toilet	7
Fou Fou Grinding and Processing Stations	4
Food Court	4
Market Exchange	4
Field Market Exchange Stations	20



Description	Quantity
Technology	
Truck GPS Systems	161
Warehouse CCTV Systems	7
Warehouse Inventory Tracking Systems	7
Standard Office Systems	7
Financial	
AlexPay	7
Human Capital	330
Managers/Supervisors	30
Business Office Staff	35
Warehouse Staff	40
Truck Drivers	160
Fleet Maintenance Staff	35
Market Staff	20
Bath/Public Toilet/Staff Living Quarters	10

Logistics Operations and Markets



Hub and Spoke Transportation Logistics and Market Operations

- Logistics Transportation Staff
 - Experienced Long-Haul and Short Route Drivers
 - Truck Driver Training Programs
- Central Dispatch and Route Monitoring
 - GPS Transportation Monitoring and Security
 - Route Dispatchers
- Truck Maintenance and Safety Teams
 - Master Mechanics
 - Mechanic Training Programs
- Warehouse Inventory Management
 - Warehouse Supervisors and Workers
 - Onsite Staff Living Quarter Managers
- Food Market Exchange
 - Market Managers
 - Bath House Managers
 - Public Restrooms
 - Food Court Operations
- Field Market Exchange Supervisors

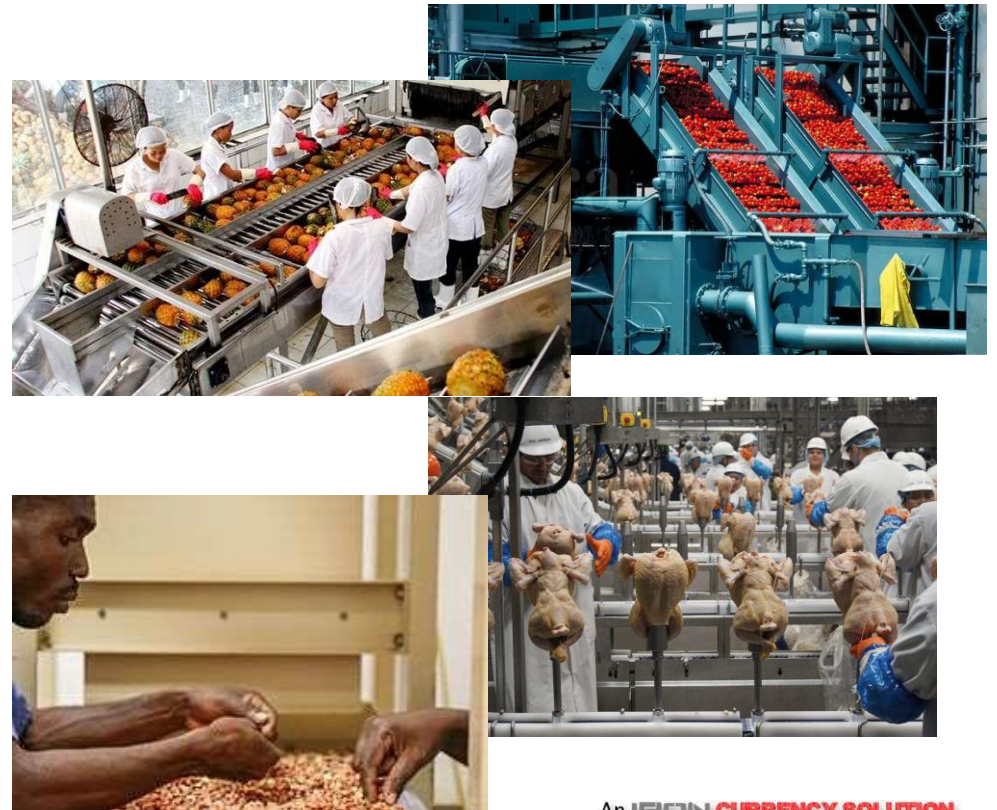
Future Operations

» Air Cargo Transport



ICS-Groupe Oberlin
BePartofIt

» Manufacturing, Processing and Assembly

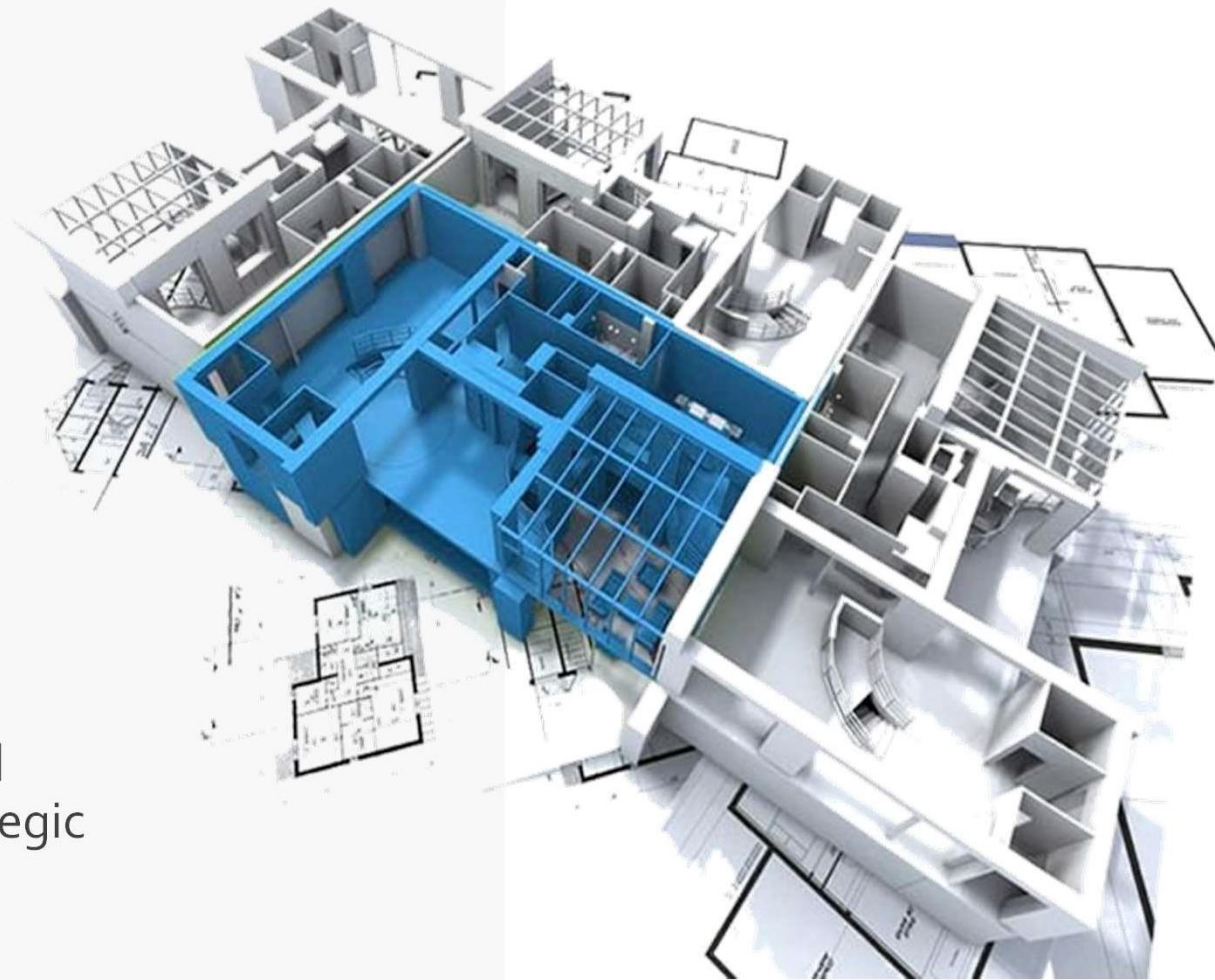


An **IRON CURRENCY SOLUTION**

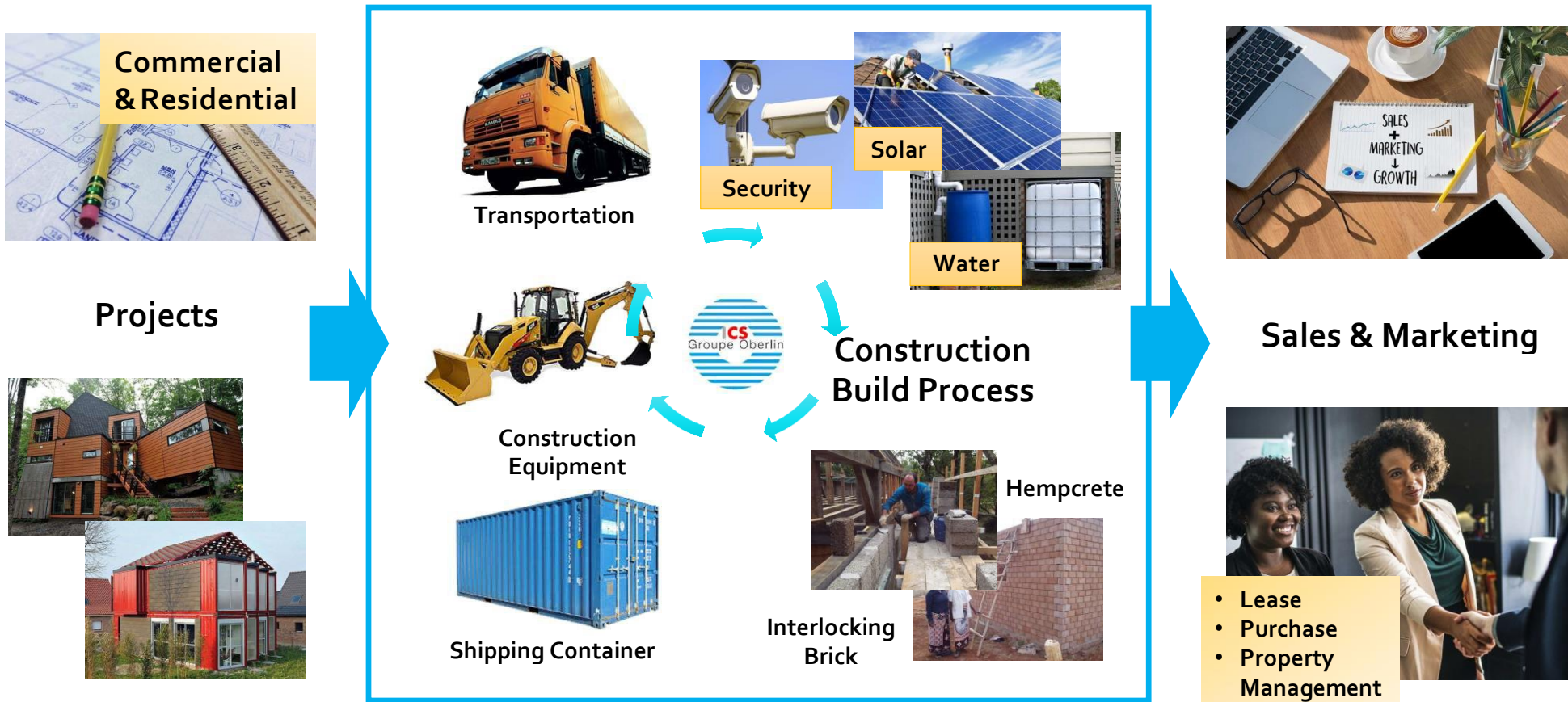
Proprietary & Confidential

ICS-Groupe Oberlin Construction

Architecture, Construction and Real
Estate Property Management Strategic
Partnership



Operational Growth Strategy : Construction and Real Estate Management



Proposed Container Commercial and Residential Construction



Properties will be sold to investors for multi-family and single-family rental property, as well as single family purchases.

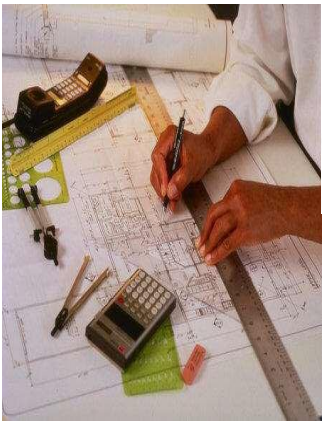
Container homes, popular in Europe and Asia, can reduce the build time to weeks instead of months. Properties will be developed for communal living, apartment living and single-family homes through out Central Africa.

The size container that needs to be used for housing is the 9'6" Super Hi-Cube. The Standard 8'-6" can be used for storage/warehousing or modified to meet specific needs. Combinations of unit sizes can be used to create our desired structure.

Construction Material Needed

- Containers
- Solar Panels
- Water Filtration System
- Inside Construction Build Out
- Etc.

Architectural Design and Construction



Architectural Design and Construction Services

- Remodel/Redesign Existing Structures
- New Design and Construction
- Residential and Commercial Properties
- Human Capital Expertise and Educational Development
 - Architecture
 - Master Architect
 - Sr Architect
 - Architect Apprentice Program
 - Trades – Carpentry, Electrical, Plumbing, HVAC
 - Master Craftsman Trades
 - Trades Apprentice Program



Thank You

👤 Gala Fary, CEO IRON Currency Solutions

☎ +1 404 772 8400

✉ Gala.Fary@ironcurrencysolutions.com

🌐 <http://www.ironcurrencysolutions.com>

<https://www.groupeoberlin.com/>

